

AacerCush I Anchored

FIXED RESILIENT SYSTEMS

Resilience, low cost and ease of installation make AacerCush I Anchored a widely utilized athletic floor. AacerCush I Anchored is chosen for racquetball and squash courts, stage floors, gymnasiums and multipurpose rooms.



INFINITY
Wood Floors

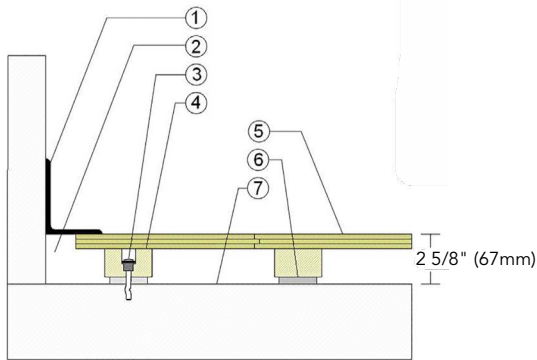


AacerCush I Anchored



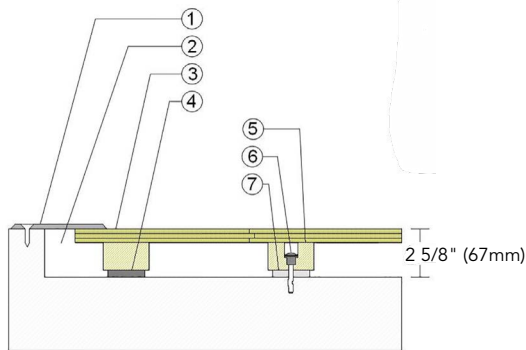
1. Infinity MFMA Maple
2. Nom. 2 x 3 (38mm x 64mm) AacerCush Sleeper
3. 3/8" (10mm) AacerCush Pad

WALL BASE



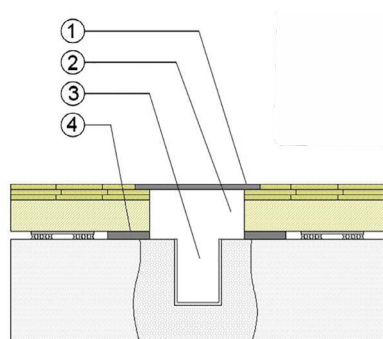
1. 3" x 4" (76mm x 101mm) Vent Cove Base
2. 1-1/2" (38mm) Min. Expansion Space
3. Collared Steel Anchor
4. 1-1/2" x 2-1/2" (38mm x 64mm) Sleeper
5. 25/32" (20mm) MFMA Maple Flooring
6. 3/8" (10mm) AacerCush Pad
7. Vapor Retarder

THRESHOLD



1. 1/4" (6mm) Aluminum Threshold
2. 1-1/2" (38mm) Min. Expansion Space
3. 25/32" (20mm) MFMA Maple Flooring
4. Solid Blocking at Doorway
5. 1-1/2" x 2-1/2" (38mm x 64mm) Sleeper
6. Collared Steel Anchor
7. 3/8" (10mm) AacerCush Pad

EQUIPMENT



1. Floor Plate
2. 1-1/2" (38mm) Expansion Space at all Inserts & Electrical Penetrations
3. Concrete Floor Penetration
4. Solid Blocking at Insert

Certified



Green Status and LEED Contributors



- FSC® Certified Maple - MR
- FSC® Certified Subfloor Components - MR
- Environmental Quality - EQ
- Regional Materials - MR

Resilience

3/8" (10mm) AacerCush Pad
*Other pad options available.

Slab Depression

- 25/32" (20mm) Flooring
-2 5/8" (67mm)

Optional AacerCush Systems

AacerCush I+ Anchored
AacerCush I
AacerCush I+
AacerCush II

Subfloor Construction

Sleeper

System Type

Fixed Resilient

Testing Laboratory Partners



It is the policy of Infinity Wood Floors to continuously improve its line of products. Therefore, Infinity Wood Floors reserves the right to change, modify or discontinue systems, specifications and accessories of all products at any time without notice or obligation to purchaser.



see us at
Sweets.com



Jan 2023